

SHOP LC



GEMSTONE WORKSHOPS

Explore More with Us!

Sleeping Beauty
TURQUOISE





**TURQUOISE:
NATURE'S GIFT IN
BLUE**



TURQUOISE TIMELINE



6000BC

1st mined in
Sinai Peninsula

Worn by
Egyptian Queens
5500BC



900AD

Aztecs and Mayans
used it to create
intricate masks

Native Americans
used Turquoise as
currency

1500s



A GEMSTONE WE CAN'T HELP BUT LOVE

LEGACY

- A legacy of turquoise appreciation spans the globe, from ancient Egypt to Mesoamerica to China.

AVAILABILITY

- For years, due to its consistent color, low cost and high availability, it has also been extremely popular among Native American artists, particularly from the Zuni Pueblo..

POPULARITY

- Despite mine closure, remains in high demand.
- Widely considered one of the most sought-after turquoise.



MINING LOCATION

The Sleeping Beauty Mine
is located in Globe, AZ.
Approximately 90 miles
east of Phoenix.



NAMING STORY!



- Named after the mountain it was mined from.
- Resembles a sleeping woman with crossed arms.

SLEEPING BEAUTY TURQUOISE CURRENT MINE STATUS

Sleeping Beauty mine produced abundant turquoise.

Closed in late 2012 due to govt. regulations and mining costs.

All available Sleeping Beauty turquoise mined before 2012.

Prices soared after the mine's closure.



ARIZONA'S MOST ICONIC TURQUOISE

In the US, Sleeping Beauty mine was one of the largest turquoise producers.

It was also known as 'Pinto Valley' and 'Castle Dome'.

Closed during the early 1960s and only reopened over the last decade to mine copper and turquoise.

Made its history in the turquoise world because of its great quality.



GEM FACTS



MOHS HARDNESS:
5-6



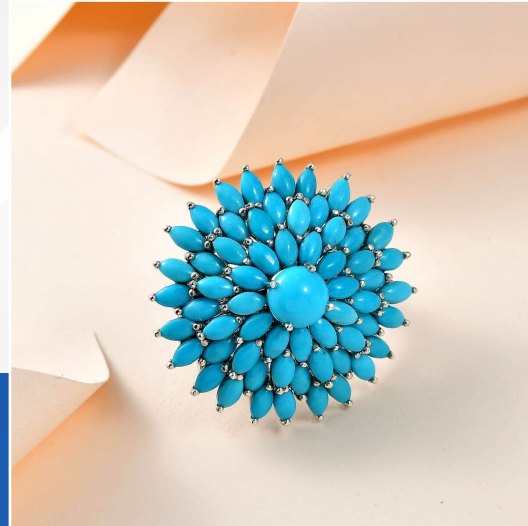
BIRTHSTONE:
DECEMBER



ANNIVERSARY
GEM: 11TH



MINERAL:
TURQUOISE



WHY IS IT SO POPULAR?

Known for its solid sky-blue color and lack of host rock matrix webbing.

Crisp, clean appearance, used in a lot of fine jewelry.

Single mine gem. However, no longer mined.

Mine shut down in 2012. Hence, highly rare.



SLEEPING BEAUTY TURQUOISE JEWELRY AT SHOP LC

- We source SBT which is a natural Turquoise certified for Zachary treatment, this ensures that we keep away from turquoise which are treated and impregnated with colorful polymers
- Due to closure of mines almost 12 years back, market is completely dried up with natural and original SBT, our old time, largest and loyal source is a guaranteed source to give our customers the best.
- There is no middlemen between the manufacturer and us, this ensures most reasonable cost by elimination of middlemen overheads

HAPPILY, EVER AFTER?



Previous rough from the mine sold for \$10 per carat.



Today, reached \$80 or higher due to increased demand.



Available rough is often of lower quality than in the past.



Larger stones are less common.



Celebrities in Sleeping Beauty Turquoise



YIELD AND AVAILABILITY

Only a small fraction of Sleeping Beauty turquoise qualifies as gem-grade.

Consequently, it often commands a high price.

This rarity makes it less accessible to jewelers, collectors, and lapidary artists.

Scarcity contributes to its limited presence in the market.



NATURAL OR TREATED?



Genuine stone.



Most common
treatment: Zachery.



ENHANCING TURQUOISE'S DURABILITY AND BEAUTY

Zachary is an exclusive process for treating turquoise.

James E. Zachery invented these methods in late 1980s.

Treatment increases durability of the gem.

Makes the gem Less porous, meaning it keeps the color better.

Also improved color saturation.

Makes the stone easier to polish.

Essential Elements

When seeking a top-notch Sleeping beauty turquoise ring, pay close attention to the following:

- **Stone Quality:** Look for a smooth, unblemished surface with vibrant blue color.
- **Setting:** Opt for settings like bezel or prong that enhance the stone's natural beauty.
- **Metal:** Gold ring, silver, and platinum each offer unique aesthetic appeals. Choose based on your personal taste.



Style & Occasion

Finding the perfect sleeping beauty turquoise is also a matter of matching it to the occasion.
Here are some items:



Item: 7682627

Luxoro 10K Yellow Gold AAA
Sleeping Beauty Turquoise Ring

Price: \$1187



Item: 3847528

Iliana 18K White Gold AAA Sleeping
Beauty Turquoise Earrings

Price: \$716



Item: 7635308

Certified & Appraised Rhapsody 950
Platinum AAA Sleeping Beauty
Turquoise Beaded Necklace

Price: \$2279.99



Care Tips

Turquoise is a relatively soft gemstone, and it requires special care:

- **Avoid Chemicals:** Lotions and perfumes can affect the stone's color.
- **Regular Cleaning:** A soft cloth keeps it shining.
- **Proper Storage:** Keep it separate to avoid scratches.



QUALITY FACTORS



COLOUR

The even blue color of this cabochon would be called Persian blue in the trade.



CUT

Although turquoise is usually cut into beads and cabochons, it can also be carved.



CLARITY

These free-form turquoise cabochons show a typical matrix pattern.



CARAT WEIGHT

Cutters work around large areas of matrix to yield pieces of evenly colored turquoise.

SOME INTERESTING FACTS TO KNOW

Originally a copper and gold mine in the late 1800s.

Turquoise emerged as an unexpected byproduct.

Abundant copper and turquoise found in the Arizona area.

Copper in the soil contributes to the bright blue hue.

Gained immense popularity in the 1970s.

Now one of the most renowned turquoise mines in the Southwest.

Known for its pale, clear blue shades in Native American jewelry.

PRICEY AUCTIONS!!



Turquoise and diamond brooch, late 19th century

Estimate
4,000 - 6,000 GBP



featuring a
cabochon turquoise and diamonds set in 18-karat yellow and white gold;
\$140,000.

PRICEY PIECES!!

Turquoise Necklace Value \$85,500



Rare Turquoise And Diamond Platinum Ring

Value \$19,000





GEM LORE & METAPHYSICAL



Said to represent health, luck.



Said to resonate with energy of truth.



Said to promote self-confidence.



Said to help feel calm, relaxed when speaking in public.



Said to bring good fortune, success, prosperity to wearer.



Said to combat feelings of depression.

Let's Play a Quiz

When Turquoise was mined for the first time in
Sinai Peninsula?

1. 6500 BC
2. 5500 BC
3. 6000 BC
4. 900 AD

When does the mining of Sleeping Beauty
Turquoise closed?

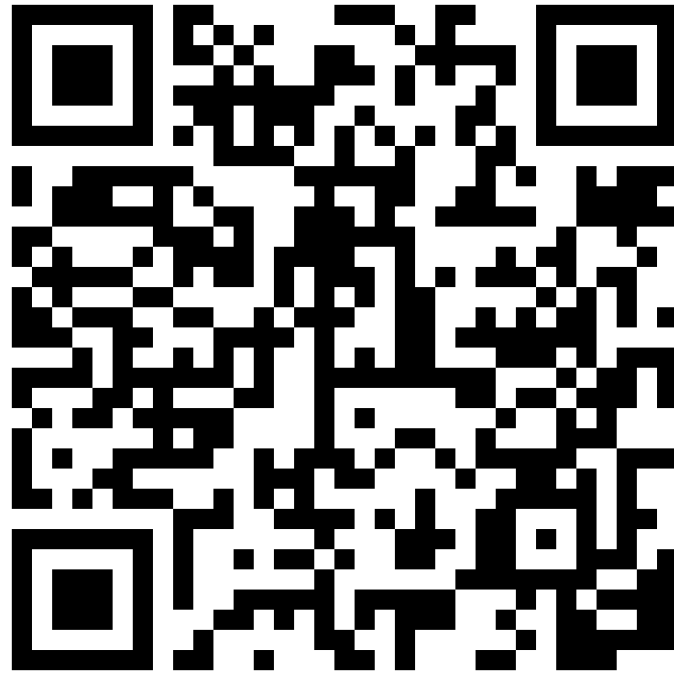
1. 2000
2. 2010
3. 2012
4. 2014

Which month has Turquoise as its birthstone?

1. April
2. July
3. December
4. February

Unlock Exclusive Shopping!

Simply scan the QR code to explore both our stunning PPT items and dazzling Sleeping Beauty Turquoise collection.





THANK YOU