

# SHOP LC



GEMSTONE WORKSHOPS

Explore More with Us!



# AQUAMARINE

# Captivating Blues: The Magic of Santa Maria Hue

- Aquamarines, with their deep, captivating blue, have enchanted gem lovers for ages.
- Aquamarines are one of the most universally admired gemstones.
- Flattering to all skin tones, their blue hue is reminiscent of azure waters.
- While all aquamarines flaunt an entrancing play of colors, what makes the Santa Maria rocks special is the intensity of color.
- Many highly valuable and sought-after examples have been found at the Santa Maria de Itabira mine in Brazil.





# GENERAL FACTS

Name comes from Latin word: 'aqua' = water & 'marina' = sea.

Member of Beryl Family.

Ranks 7.5 – 8 on Mohs Scale of Hardness.

Displays blue hue.

19th wedding anniversary gift.

Birthstone of March.

Official state gem of Colorado, USA



# The Beryl Family

Beryl is an aluminosilicate of beryllium that includes aquamarine, emerald, heliodore and morganite.

Known from the Greeks as Bêrullos, colorless beryl was used to make magnifiers.

Beryls have a hardness of 7.5 to 8 on the Mohs scale.

The best-known varieties used in jewelry are:

- aquamarine, blue and green-blue
- emerald, green because of the presence of chromium
- heliodor, gold or yellow due to the presence of iron
- morganite, pink to orange, containing lithium and cesium





# RARITY



Limited Source



Exceptional Clarity



Unique Color



Finding large, high-quality specimens is rare.



Specific geological conditions required for formation.



Market Demand



Each Aquamarine possesses distinct qualities.



# WHERE IS AQUAMARINE FOUND?

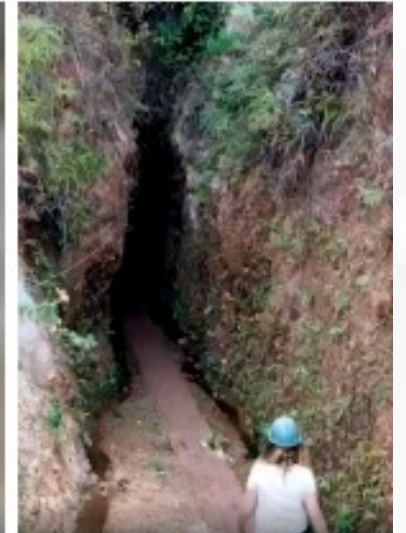
Various mines in the world for Aquamarine are:

Australia, China, Kenya, Madagascar, Mozambique, Nigeria, Pakistan, United States, Zambia and Brazil





# MINING IMAGES





# Santamaria Aquamarine: Journey Through History

Deposits found at this site were plentiful. Soon became world's principal mining site.

More than 154 lbs of high-quality gemstones mined in 1796.

Became popular in 1910 after discovery of Brazilian mines. Greeks wore it around 480 to 300 BCE.

Sailors used to wear aquamarine amulets.

Said to ward off treacherous calls of mythical sea sirens.





# FINISHED AQUAMARINE





# Mining Details

- Artisanal mining done here.
- An artisanal miner is subsistence miner who is not officially employee but works independently.
- Mine minerals using their own resources, usually by hand.
- Extracts rough stone from ground using simple pulley system.
- They also use pickets, shovels and hammers.
- Mining aquamarine is a lengthy and tiring process.
- It makes these gemstones so special.







# IS AQUAMARINE TREATED?

Pure beryl is colorless.

Blue color caused by trace amounts of iron.

Tones can vary from very light to moderately dark.

Undergoes heat treatment.

Treatment brings out blue hue.

Undetectable to naked eyes.

Gemstone's properties & value remains unchanged.

# PROCUREMENT INFORMATION

Procured  
from finished  
gems from 3-  
4 vendors.

Very time  
consuming to  
sort through  
the entire  
lot.

Only few  
vendors have  
this rare hue  
of  
Aquamarine.

Out of 100  
pcs, only 20-  
30 pcs  
matched our  
color criteria





# 4C's OF Santa Maria Aquamarine



## COLOR

Evaluated for hue, tone, and saturation. Preferred is a rich blue color.



## CUT

Refers to how the gemstone is fashioned. Influences brilliance and sparkle.



## CLARITY

Assessed for inclusions, fractures, or blemishes. Higher clarity is prized.

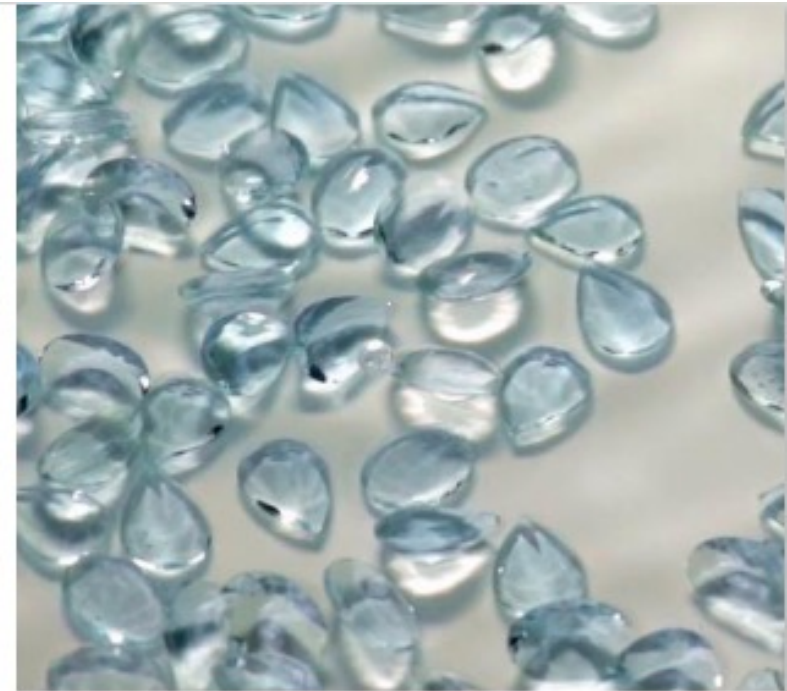


## CARAT WEIGHT

Size or weight of the stone. Larger stones are generally more valuable.

Snippets from

# Cutting Process





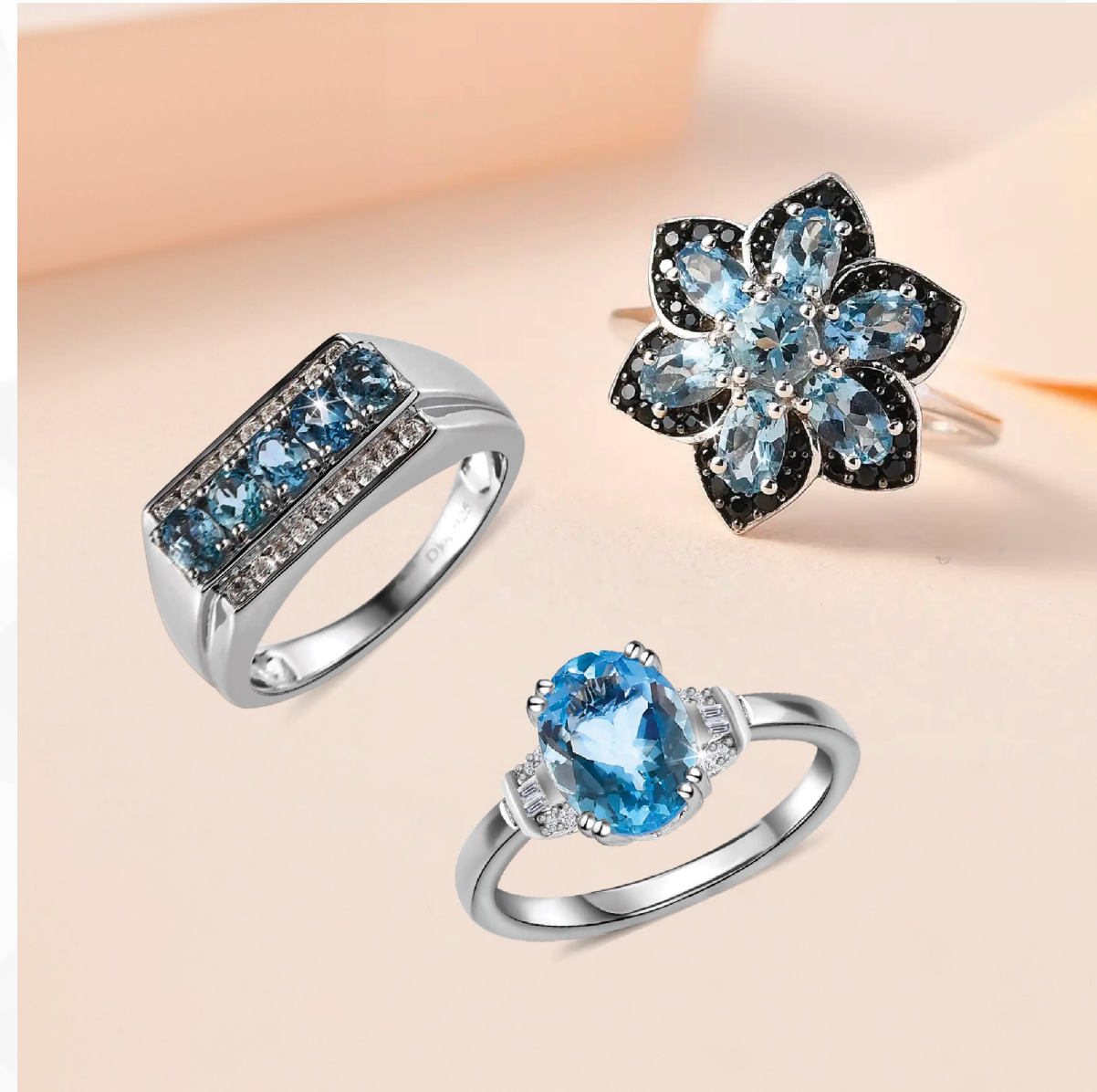
# HOW AQUAMARINE IMPACTS EVERYDAY LIFE

- **Love and Relationships:**

- Aquamarine nurtures loving relationships with its calming energy.
- It encourages open communication, deepening connections with loved ones.
- Keep this gem close to heal and strengthen your emotional bonds.

- **Career and Success:**

- In your professional journey, Aquamarine serves as a beacon of clarity.
- It boosts confidence and aids in clear, persuasive communication.
- Place it on your desk to enhance focus and creativity in your workspace.



# ASSOCIATION WITH ZODIAC SIGNS

A strong connection exists between aquamarine and Pisces. Besides being the modern March birthstone, this sea gem is also a major Piscean birthstone.

However, this isn't the only astrological sign that shares a connection with this sea green stone.

There are several ancient texts that suggest a connection between Scorpio and aquamarine, which could be used to treat ailments of the upper leg and thigh.



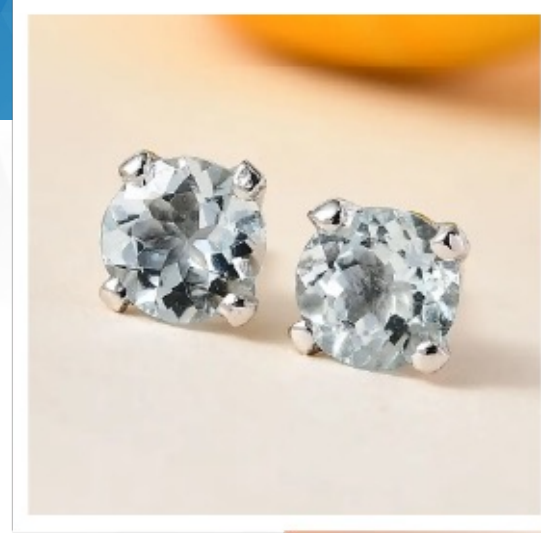


# CARE AND MAINTENANCE

Aquamarine, with a hardness of 7.5 to 8 on the Mohs scale, is a relatively durable gemstone but still requires proper care and maintenance to retain its beauty and integrity.

Proper cleaning of aquamarine helps preserve its luster and clarity. Here are the recommended cleaning methods:

- **Mild Soap Solution:** A gentle soap mixed with warm water is typically safe for cleaning aquamarine. Using a soft-bristle brush can help remove dirt and oils.
- **Ultrasonic Cleaners:** Many jewelers use ultrasonic cleaners for aquamarine, but caution is advised, especially for stones with visible inclusions or fractures.
- **Avoid Harsh Chemicals:** Chemicals such as bleach or ammonia can damage the stone and should be avoided.

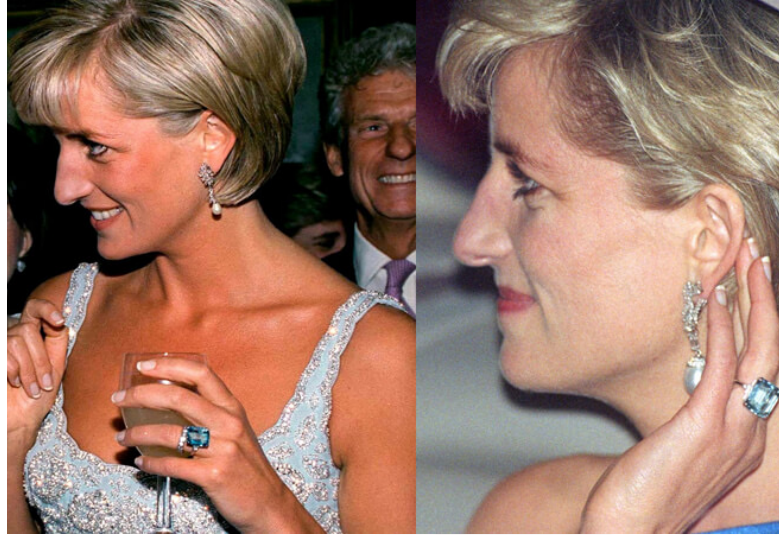


# 10,363 Carats of Splendor: Showcasing the Dom Pedro Aquamarine

- Housed at the Franklin D. Roosevelt Presidential Library and Museum in Hyde Park, New York, Dom Pedro Aquamarine – believed to be the **largest faceted aquamarine in the world.**

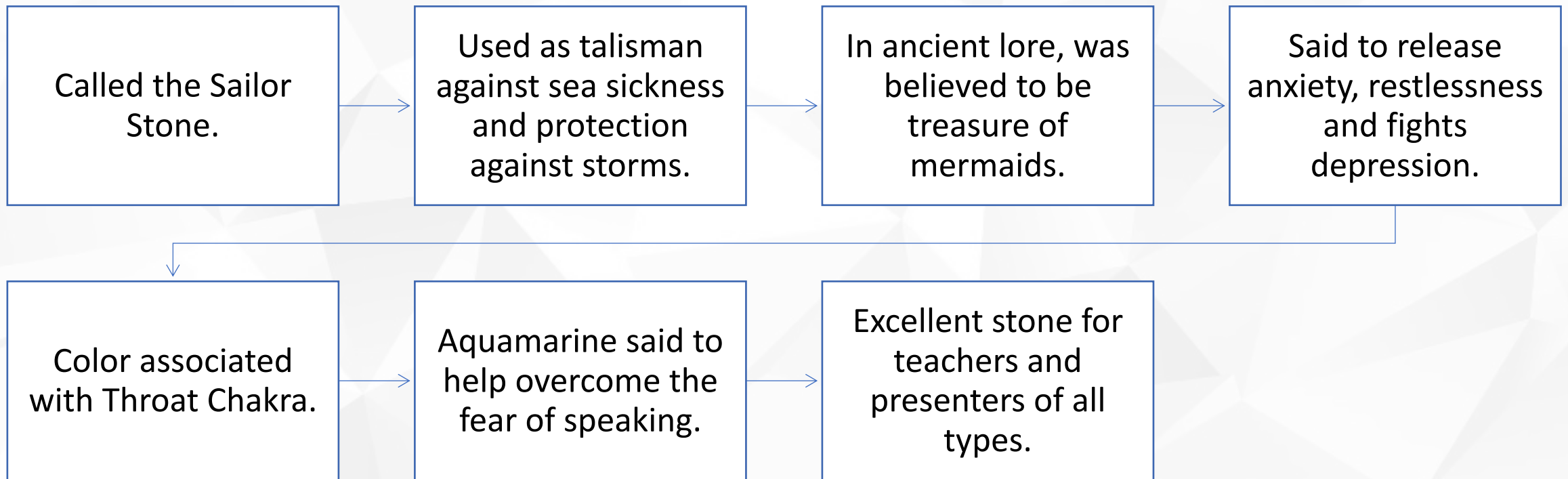






## Celebrities in Aquamarine

# Metaphysical Properties





# FAQ's

**Q: WHY DOES AQUAMARINE COST SO MUCH MORE THAN BLUE TOPAZ THAT'S ALMOST THE SAME COLOR?**

A: Blue topaz is more common because the color is produced by treating colorless topaz with radiation. Aquamarine is rarer in nature, especially in fine color. Its long history as a gem also adds to its collectability.

**Q: WHY DON'T THE AQUAMARINE SIDE STONES IN MY RING MATCH THE CENTER STONE?**

A: Aquamarine's color gets more intense as it gets larger. It is very difficult to find small sizes with saturated color: most stones below a carat in size have a pale color.

**Q: ARE ORIGINS LIKE "SANTA MARIA" IMPORTANT TO THE VALUE OF AQUAMARINES?**

A: Although it's always interesting to know where a gem was mined, origin isn't an important factor in an aquamarine's value. Famous mines are well regarded because they produce fine-quality gems that are valuable; gems aren't fine or valuable just because they come from famous mines.

# Aquamarine Jewelry at Shop LC



Certified Iliana 18K Rose Gold  
AAA Santa Maria Aquamarine  
and G-H SI Diamond Double  
Halo Ring 1.00 ctw  
Item: 7272446  
Price: **\$1614.99**



Luxoro 10K Yellow Gold  
Premium Mangoro  
Aquamarine and G-H I2  
Diamond Pendant 3.15 ctw  
Item: 7729202  
Price: **\$1299.99**



Certified & Appraised Iliana  
18K White Gold AAA Santa  
Maria Aquamarine and G-H SI  
Diamond Earrings 1.60 ctw  
Item: 7730176  
Price: **\$2149.99**



Certified and Appraised  
Rhapsody 950 Platinum  
AAA Santa Maria  
Aquamarine Beaded  
Necklace 18 Inches with 2  
Inch Extender 60.00 ctw  
Item: 7720757  
Price: **\$997.99**



# Unlock Exclusive Shopping!

Simply scan the QR code to explore both our stunning PPT items and dazzling Aquamarine collection.





**THANK YOU**