

Tourmaline

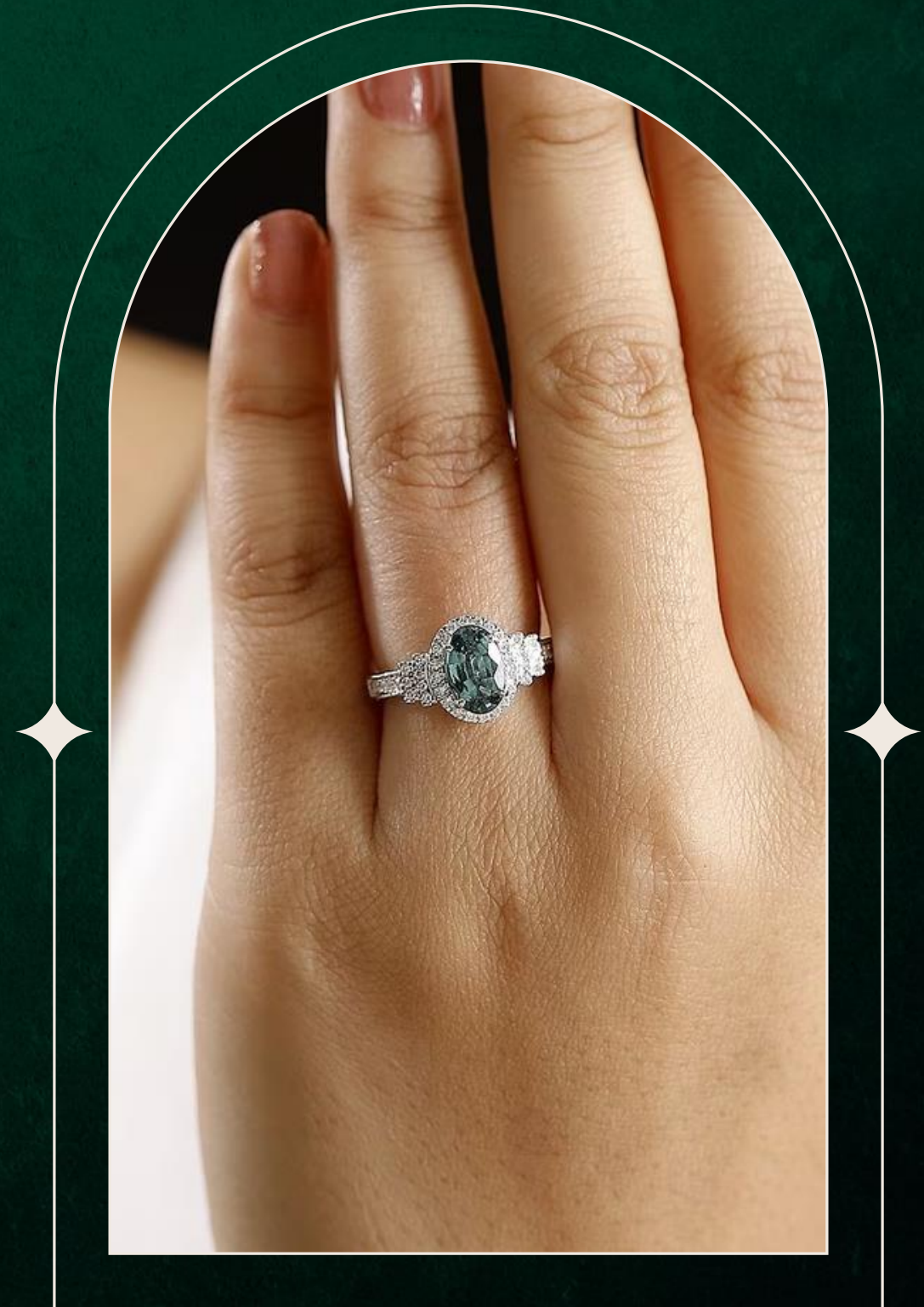
Earth's rainbow trapped in stone



○ ABOUT TOURMALINE

Tourmaline has long been prized for its aesthetic appeal and remarkable diversity of colors, ranging from vivid pinks and deep greens to electric blues and rich reds. This makes it one of the most versatile and sought-after gemstones in the world of jewelry design.

It is one of the most diverse gemstones, known for its highly complex chemical structure with several elements densely packed together. It is typically found in pockets within pegmatites and was first discovered in Brazil in 1500. Initially mistaken for emeralds, Tourmaline was later recognized as a distinct mineral species in the 1800s.





MORE FACTS ABOUT TOURMALINE

- October's birthstone symbolizing love, creativity, and protection
- Believed to promote emotional balance and shield against negative energies and it is popular among crystal enthusiasts and spiritual practitioners.
- Treasured for its extraordinary range of colors. Rarest varieties are: Rubellite, Paraiba, Indicolite, Lagoon while the most popular are Multi tourmaline.





MORE FACTS ABOUT TOURMALINE

- Some varieties are heat treated for color enhancement.
- These multicolored stones are highly valued in jewelry because each piece is unique - no two multi tourmalines have the exact same pattern or color arrangement.
- Slight changes in the trace elements during crystal growth can result in dramatic shifts in color, leading to the formation of multi-colored or "multi tourmaline" crystals.



HISTORY OF TOURMALINE



Tourmaline has been admired for centuries across many cultures. Ancient civilizations in India and the Middle East believed it had protective and healing powers. In the 17th century, Dutch traders introduced tourmaline to Europe after bringing it from Sri Lanka, where it was called “turмали,” meaning “mixed gems.”

By the 1800s, tourmaline gained popularity in the United States, especially after deposits were discovered in California and Maine. It even became a favorite of the Chinese Dowager Empress Cixi, who adored pink tourmaline.

Today, tourmaline is treasured worldwide for its wide spectrum of colors, symbolic meanings, and gemological intrigue, making it both a historic and modern favorite.

DETERMINING TOURMALINE'S VALUE

The value of tourmaline is determined by several factors, including its color, cut, clarity, carat weight, origin and grade. Color is the most critical factor, especially for rare varieties like Paraiba and rubellite.

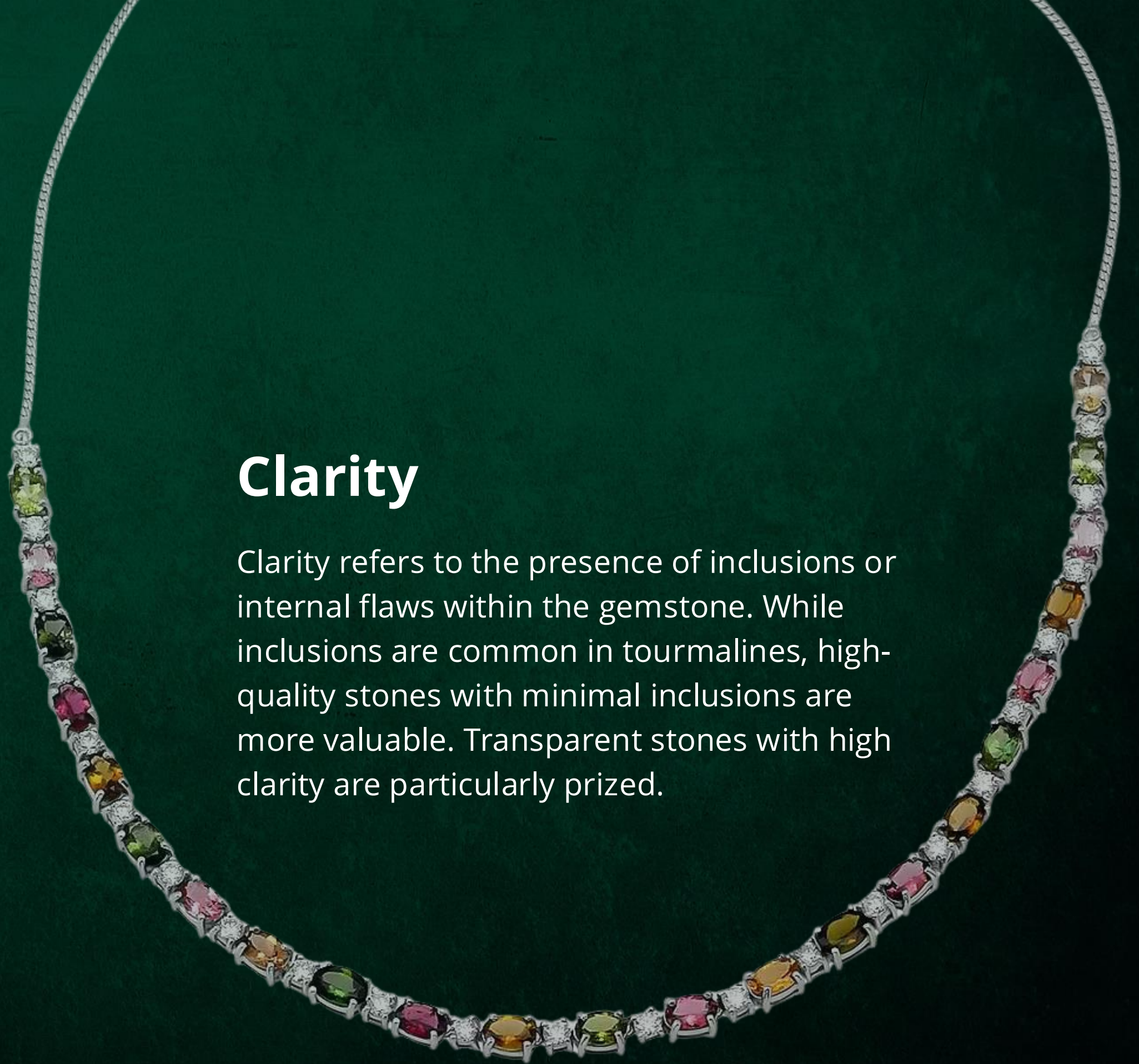


Color

Tourmaline's color is its most important value factor, ranging from neon blue Paraiba to deep red rubellite. Pure hues without secondary tones are most valuable. Medium to dark tones are preferred in green and pink varieties. High saturation, especially in vivid blues and reds, significantly increases the gems value.

Clarity

Clarity refers to the presence of inclusions or internal flaws within the gemstone. While inclusions are common in tourmalines, high-quality stones with minimal inclusions are more valuable. Transparent stones with high clarity are particularly prized.

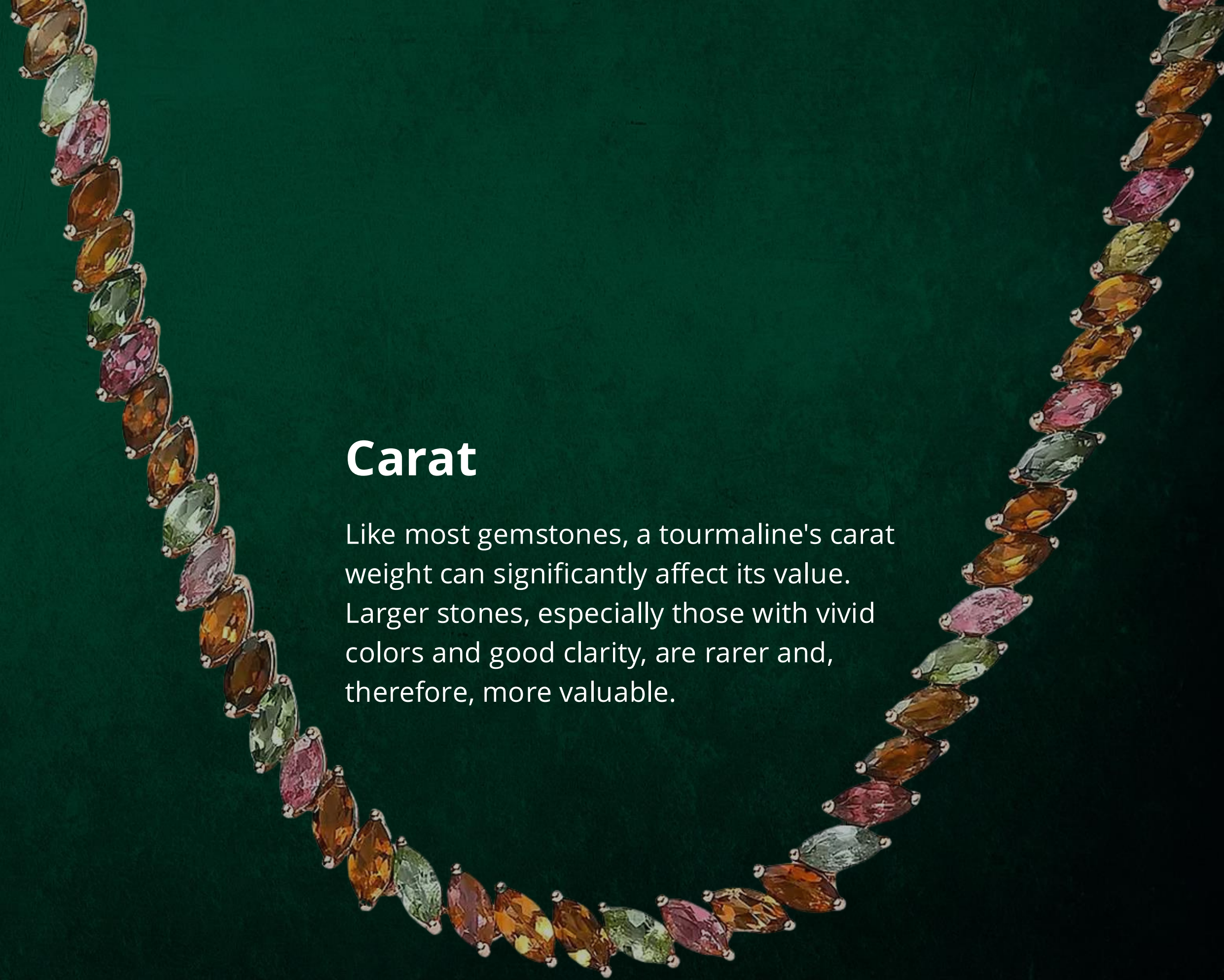


Cut

Tourmaline can be cut into various shapes, from traditional rounds and ovals to unique cuts like pears and emerald shapes. The cut of a tourmaline can significantly influence its brilliance and overall beauty.

Carat

Like most gemstones, a tourmaline's carat weight can significantly affect its value. Larger stones, especially those with vivid colors and good clarity, are rarer and, therefore, more valuable.



DIFFERENT GRADES OF TOURMALINE



Tourmaline is graded based on its color, clarity, cut, and overall quality. The finest grades display vivid, evenly distributed color with minimal inclusions. Lower grades may have visible flaws or uneven tones, affecting their brilliance and value.



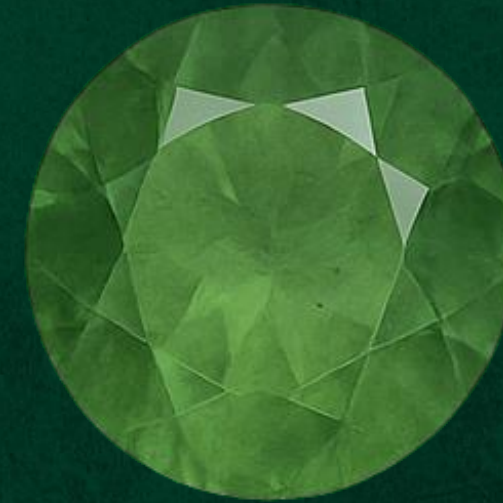
**Grade
AAAA**

These stones exhibit the best color, clarity, and cut. They are extremely rare and highly valuable.



**Grade
AAA or AA**

Once formed, crystals are cut and polished to enhance brilliance, with high-quality tourmalines showing only slight inclusions/color variations.



**Grade
A or B**

Tourmalines with visible inclusions or less desirable colors but still attractive and suitable for various types of jewelry.

DIFFERENT TYPES OF TOURMALINE



Tourmaline appears in a wide range of color combinations, giving rise to several distinct types and trade names. These include Bicolor Tourmaline with two hues, Multicolor Tourmaline with three or more, Watermelon Tourmaline featuring a pink or red core and green rim, and Rainbow Tourmaline, known for its vivid bands of multiple colors.

- Bicolor Tourmaline: Contains two distinct colors.
- Multicolor Tourmaline: Contains three or more colors.
- Watermelon Tourmaline: Pink/red center with a green outer rim, resembling a watermelon slice.
- Rainbow Tourmaline: Multiple colors in bands, often used as a trade name for vividly colored multi tourmaline



CARING FOR TOURMALINE

Tourmaline ranks 7 and 7.5 on the Mohs hardness scale, making it relatively durable for everyday wear. However, proper care is essential to maintain its beauty.



Regular Cleaning

Clean tourmaline with warm, soapy water and a soft brush. Avoid using ultrasonic cleaners or harsh chemicals, as they can damage the stone.

Storage

To prevent scratching, store tourmaline separately from harder gemstones. Could you keep it in a soft cloth or padded box?

Wear with Care

While durable, tourmaline should be protected from hard knocks and extreme temperature changes, which can cause internal fractures.



SHOP LC's TOURMALINE COLLECTION





Chairman Vault Collection Certified & Appraised Rhapsody AAAA Paraiba Tourmaline and E-F VS Diamond 3.50 ctw Ring in 950 Platinum 11.25 grams

SKU: 7860221

Price: \$39,999.99



Chairman Vault Collection Certified & Appraised Rhapsody AAAA Paraiba Tourmaline and E-F VS Diamond 3.70 ctw Ring in 950 Platinum 9.70 Grams

SKU: 8031199

Price: \$49,999.99



Chairman Vault Collection Certified & Appraised Rhapsody 950 Platinum AAAA Paraiba Tourmaline and E-F VS Diamond Ring 10.80 Grams 3.85 ctw

SKU: 7860215

Price: \$39,999.99



Chairman Vault Collection Certified & Appraised Rhapsody AAAA Paraiba Tourmaline and E-F VS Diamond 3.40 ctw Ring in 950 Platinum 10.70 Grams

SKU: 8031187

Price: \$28,999.99



782268



793453



788992

This captivating gemstone, celebrated for its mesmerizing blue-green hues, has long enchanted collectors and enthusiasts. Lagoon Tourmaline stands out for its vibrant color, rich history, and unique origins. With remarkable gemological qualities, it is a jewel worthy of any collection - adding both beauty and meaning to life and jewelry alike.

PIRINEU LAGOON TOURMALINE



WHAT MAKES PIRINEU LAGOON TOURMALINE UNIQUE?

Lagoon Tourmaline is a rare gem with vivid blue-green hues, often cut to enhance its brilliance. Its unique pleochroism reveals shifting colors from different angles, making it a captivating and sought-after choice for collectors and jewelry lovers.

GEMOLOGICAL PROPERTIES OF PIRINEU LAGOON TOURMALINE

COMPOSITION

Lagoon Tourmaline is a boron silicate gem, with iron and titanium creating its signature blue-green hues.

PLEOCHROISM

The gem shifts colors from different angles, adding depth and intrigue.

HARDNESS/SPARKLE

With a Mohs rating of 7–7.5 and a refractive index of 1.61–1.64, it is both durable and brilliantly reflective.

CLARITY

Often transparent with few inclusions, it's highly prized by jewelers and collectors.

ICONS IN TOURMALINE



GWYNETH PALTROW

Often seen as a trend-setter in minimalist luxury, Gwyneth Paltrow has worn pink tourmaline earrings paired with diamonds, highlighting her affinity for rare, colorful gemstones. These pieces underline her effortless blend of modern elegance and timeless sophistication.



PRINCESS CATHERINE

Known for her refined taste, Princess Catherine has often chosen green tourmaline and green amethyst drop earrings. First worn during the 2016 royal tour of India, the earrings showcase her preference for elegant designs that balance modernity with tradition, adding a fresh vibrance to her classic royal wardrobe.



SALMA HAYEK

Salma Hayek dazzled at the 2013 Golden Globes in Paraíba tourmaline cabochon earrings. Their luminous blue-green glow, framed by diamonds, reflected her bold yet refined approach to jewelry, earning her a place on multiple best-dressed lists.



**LETS END THIS
WITH A QUICK QUIZ**

What trace elements give Lagoon Tourmaline its distinctive blue-green hues?

- a) Chromium and Vanadium
- b) Iron and Titanium
- c) Copper and Silver
- d) Zinc and Boron

Tourmaline exhibits a unique property called pleochroism. What does this mean?

- a) It glows in the dark
- b) It shows different colors when viewed from different angles
- c) It changes color under UV light
- d) It is magnetic

Q6. What is the Mohs hardness rating of tourmaline?

- a) 5–5.5
- b) 6–6.5
- c) 7–7.5
- d) 8–8.5

Tourmaline is known as the “gemstone of ____.”

- a) Many Colors
- b) Royalty
- c) Eternal Love
- d) Healing

What trace elements give Lagoon Tourmaline its distinctive blue-green hues?

- a) Chromium and Vanadium
- b) Iron and Titanium
- c) Copper and Silver
- d) Zinc and Boron

Tourmaline exhibits a unique property called pleochroism. What does this mean?

- a) It glows in the dark
- b) It shows different colors when viewed from different angles
- c) It changes color under UV light
- d) It is magnetic

Q6. What is the Mohs hardness rating of tourmaline?

- a) 5–5.5
- b) 6–6.5
- c) 7–7.5
- d) 8–8.5

Tourmaline is known as the “gemstone of ____.”

- a) Many Colors
- b) Royalty
- c) Eternal Love
- d) Healing

OUR CONTACT



+1 877 899 0078



www.ShopLC.com



customerservice@shoplc.com



**Simply scan the QR code to start
browsing out Tourmaline collection**

WELCOME TO EXCLUSIVE SHOPPING!

★ ★ ★
**JOIN OUR
VIP CLUB**
TODAY

WHY JOIN?



Early Access to
Exclusive Sales



Special Discounts
just for Members



Birthday
Surprises & Gifts



First Looks at
New Arrivals



VIP-Only Events
& Giveaways

IT'S FREE AND EASY!

Scan the QR Code on back side and Sign Up in Seconds

START ENJOYING YOUR VIP PERKS IMMEDIATELY!

OUR VIP MEMBERS GET MORE!

"Being a VIP member has made my shopping experience even better!
I love the exclusive deals and surprises!"

— *Happy VIP Member*

PERKS THAT MAKE A DIFFERENCE!



Priority Customer Support



Exclusive Member Contests



Rewards and Recognition

Don't Miss Out on the Fun!

Scan to Join Now



Or Visit: <https://www.facebook.com/groups/shoplc>



**THANK
YOU**
